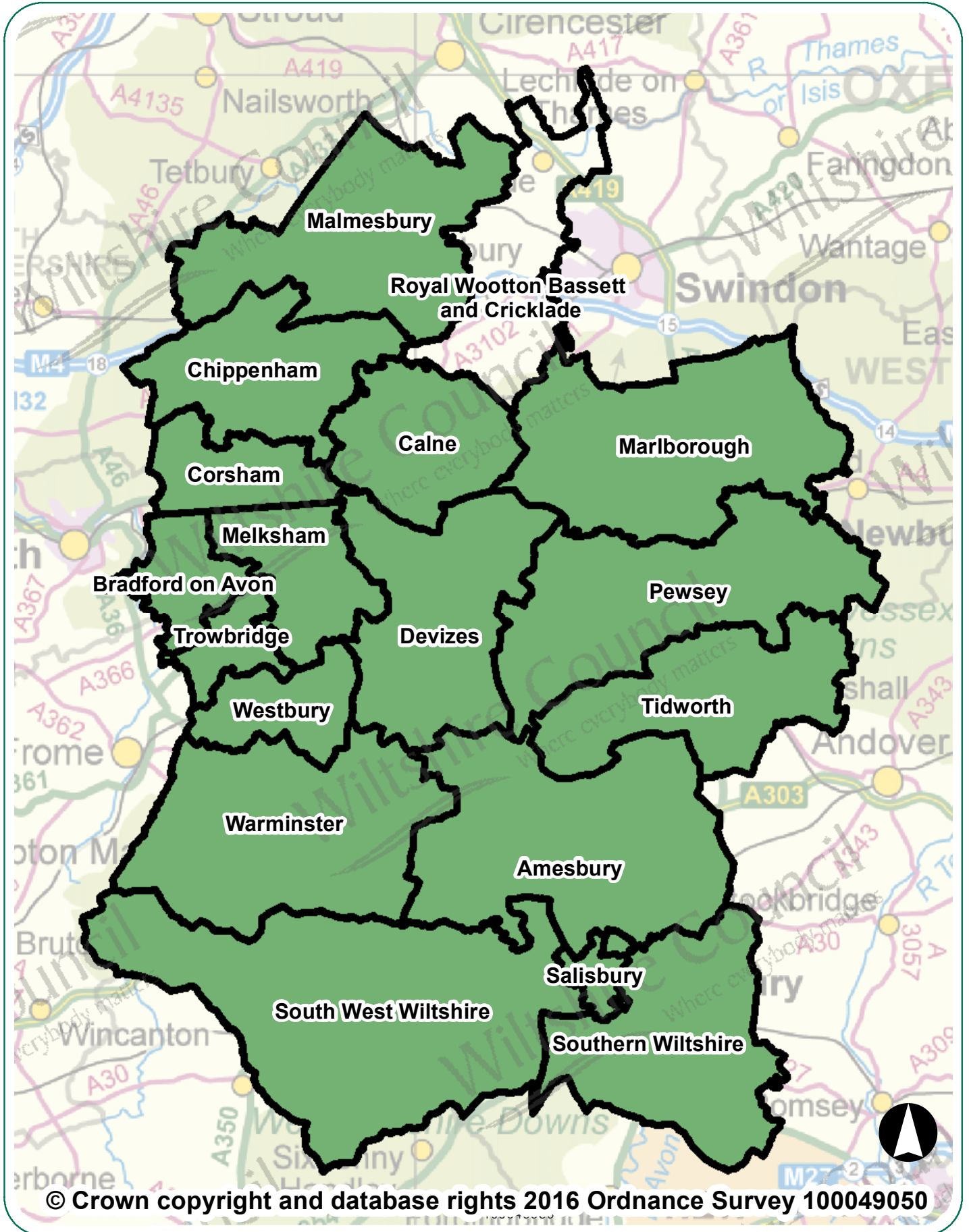


# Royal Wootton Bassett & Cricklade Area Board Highway Information



# Royal Wootton Bassett & Cricklade Area Board Highway Information

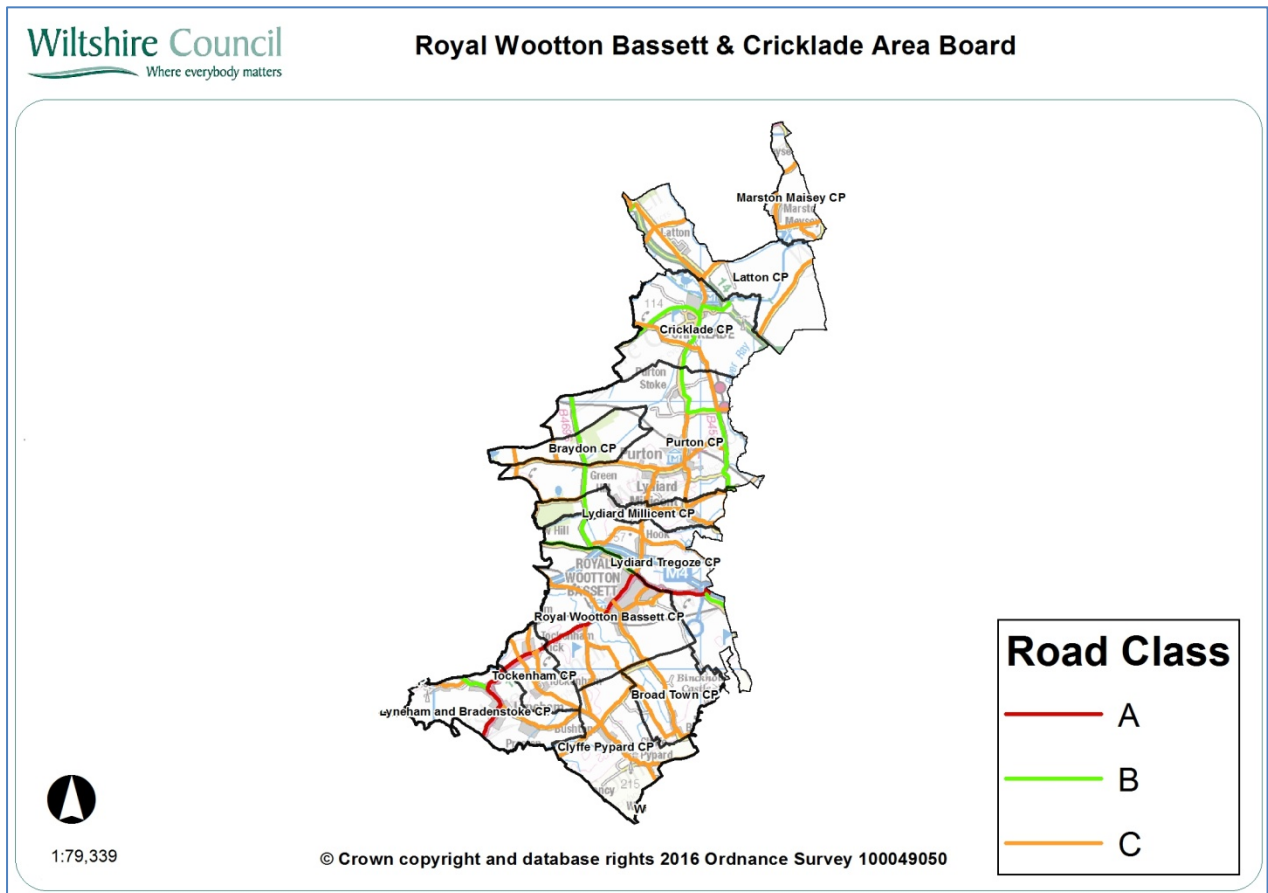
## Introduction

This document summarises highway information for your area board. It lists the recent highway and related work carried out by Wiltshire Council, including the road resurfacing carried out during the first two years of the 'Local Highways Investment Fund 2014 – 2020', and includes other information which should be of interest.

Further information on the Council's activities is available at the website [www.wiltshire.gov.uk](http://www.wiltshire.gov.uk). If you wish to report a specific highway issue please use My Wiltshire. Details are provided at the end of this document.

## Parishes in the community area are:

Purton, Braydon, Cricklade, Latton, Marston Maisey, Lydiard Millicent, Lyneham and Bradenstoke, Tockenham, Clyffe Pypard, Broad Town, Lydiard Tregoze, Royal Wootton Bassett



## Network statistics in your area

### Road length by class

| Road type          | Urban (km)           | Rural (km)    |
|--------------------|----------------------|---------------|
| A Class Roads      | 4.92                 | 9.41          |
| B Class Roads      | 3.66                 | 21.49         |
| C Class Roads      | 25.73                | 71.40         |
| Unclassified Roads | 62.8                 | 33.55         |
| <b>Total</b>       | <b>97.11</b>         | <b>135.85</b> |
|                    | <b>Overall Total</b> | <b>232.96</b> |

The council categorises its roads to reflect their importance. This enables an effective assignment of highway inspection frequencies and maintenance standards.

### Highway assets in your area

The council keeps an inventory of its highway assets in order to assist planning its highway maintenance. Important statistics relating to your board area are:

| Asset Type                | Measure       |
|---------------------------|---------------|
| Carriageway               | 232.96 km     |
| Footways adjacent to road | 139 km        |
| Footways (linked)         | 19.84 km      |
| White road centre lines   | 113 km        |
| Road kerbs                | 183 km        |
| Grass verge (maintained)  | 330 km        |
| Drainage grips            | 1, 924 number |
| Drainage pipe grips       | 396 number    |
| Drainage gullies          | 4, 827 number |
| Road signs                | 1, 824 number |
| Street lights             | 1, 307 number |

## **Major highway maintenance**

### **Road resurfacing**

Wiltshire has over 3,000 miles of road. The Council's 'Local Highways Investment Fund 2014 – 2020' is making a massive investment to improve the condition of the roads in Wiltshire over six years. The programme of work started in April 2014, and is designed and supervised by the Council's consultants Atkins, with the work carried out by our main highway contractors Tarmac and Eurovia.

The work carried out in the first two years of the programme has improved a considerable number of the roads in previously poor condition. The locations of sites treated in recent years are shown below.

### **Carriageway repairs**

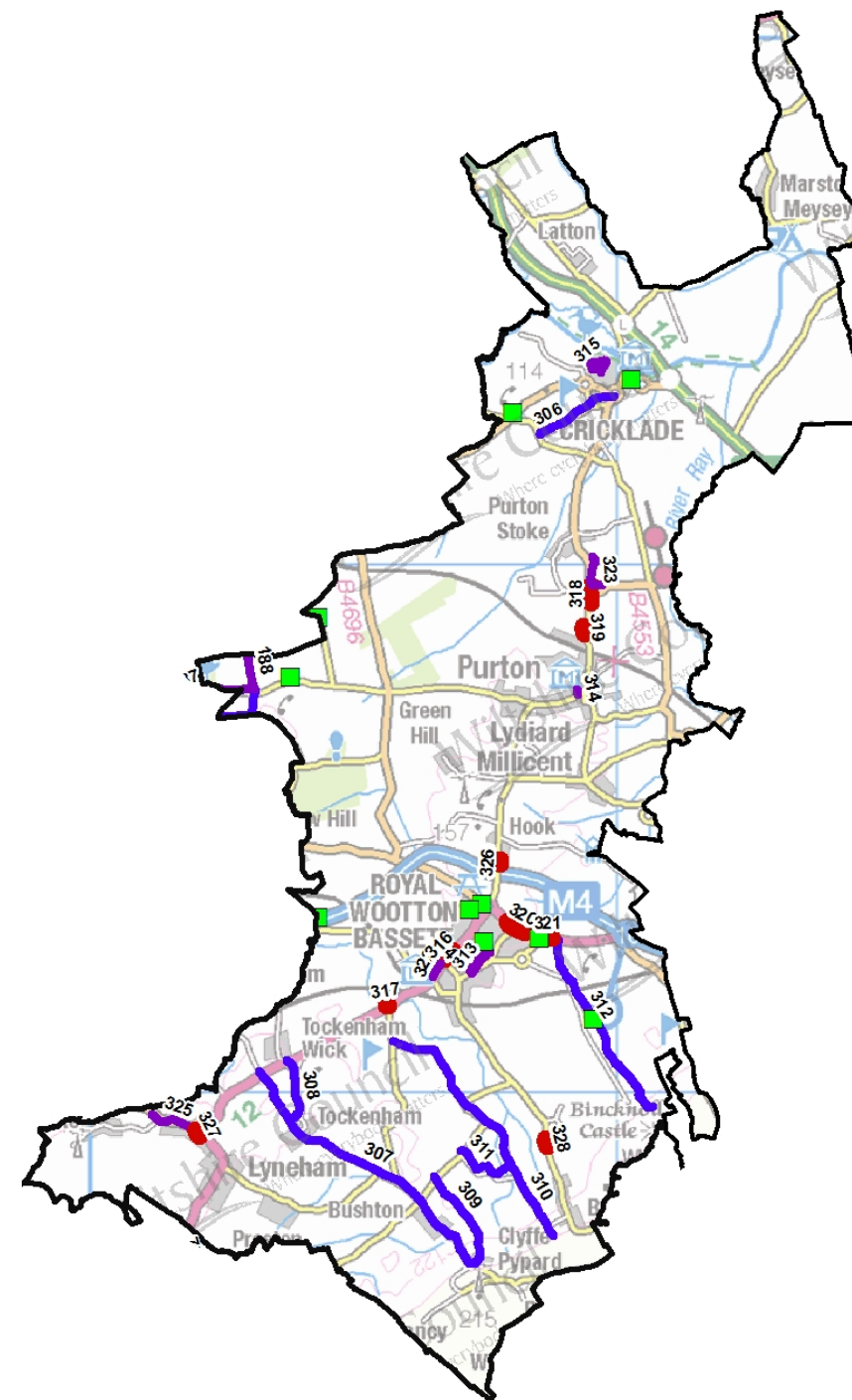
As well as resurfacing roads other works are undertaken to make localised repairs to keep the roads safe. The works undertaken in your area since 2014 are shown on the map below.

The wet winter and flooding in previous years has resulted in substantial damage to the road network. It is important that serious defects are treated promptly to keep the roads safe. The Council currently operates four Pothole teams that respond to urgent issues to keep the roads safe.

Plan showing major maintenance schemes & hand/machine patching sites completed since 2014



Royal Wootton Bassett & Cricklade Area Board



- Hand/Machine Patching
- Resurfacing
- Skid Resistance Treatments
- Surface Dressing

1:79,343

© Crown copyright and database rights 2016 Ordnance Survey 100049050



**Major maintenance completed since 2014**

| <b>No</b> | <b>Location</b>  | <b>Works</b>                 |
|-----------|--|------------------------------|
| 306       | Chelworth Road   | Surface Dressing             |
| 307       | Greenway   | Surface Dressing             |
| 308       | Primrose Hill  | Surface Dressing             |
| 309       | Wood Street  | Surface Dressing             |
| 310       | Unnamed road - Thornhill (junction Breach Lane to junction with Pye Lane, Thornhill) | Surface Dressing             |
| 311       | Manor Farm, Thornhill  | Surface Dressing             |
| 312       | Opp Sally Pusey Inn, Swindon   | Surface Dressing             |
| 313       | Parsons Way, RWB   | Resurfacing                  |
| 314       | Play Close, Purton   | Resurfacing                  |
| 315       | White Horse Road, Cricklade  | Resurfacing                  |
| 187       | Junction at Pond Plantation east to crossroads north of Queen Street                 | Surface Dressing             |
| 188       | Ravenroost Road to Queen Street crossroads   | Surface Dressing             |
| 316       | Station Rd To Lime Kiln  | Skid Resistance Improvements |
| 317       | Tockenham Wick (Park House) To Breach Lane   | Skid Resistance Improvements |
| 318       | Cricklade Road, Purton   | Skid Resistance Improvements |
| 319       | 30mph Purton to Junction B4553   | Skid Resistance Improvements |
| 320       | Swindon Road (Prince Of Wales Rbt To 60mph) To Stone                                 | Skid Resistance Improvements |
| 321       | Bincknoll Rbt To M4 Junc. 16 Interchange   | Skid Resistance Improvements |
| 194       | Gorsdon to Minety  | Resurfacing                  |
| 322       | A3102 North of White Hill Lane to Town Centre, RWB                                   | Resurfacing                  |
| 323       | B4553 Watkins Corner   | Resurfacing                  |
| 324       | UC Church Street, Royal Wootton Bassett  | Resurfacing                  |

*Royal Wootton Bassett & Cricklade Area Board Highway Information*

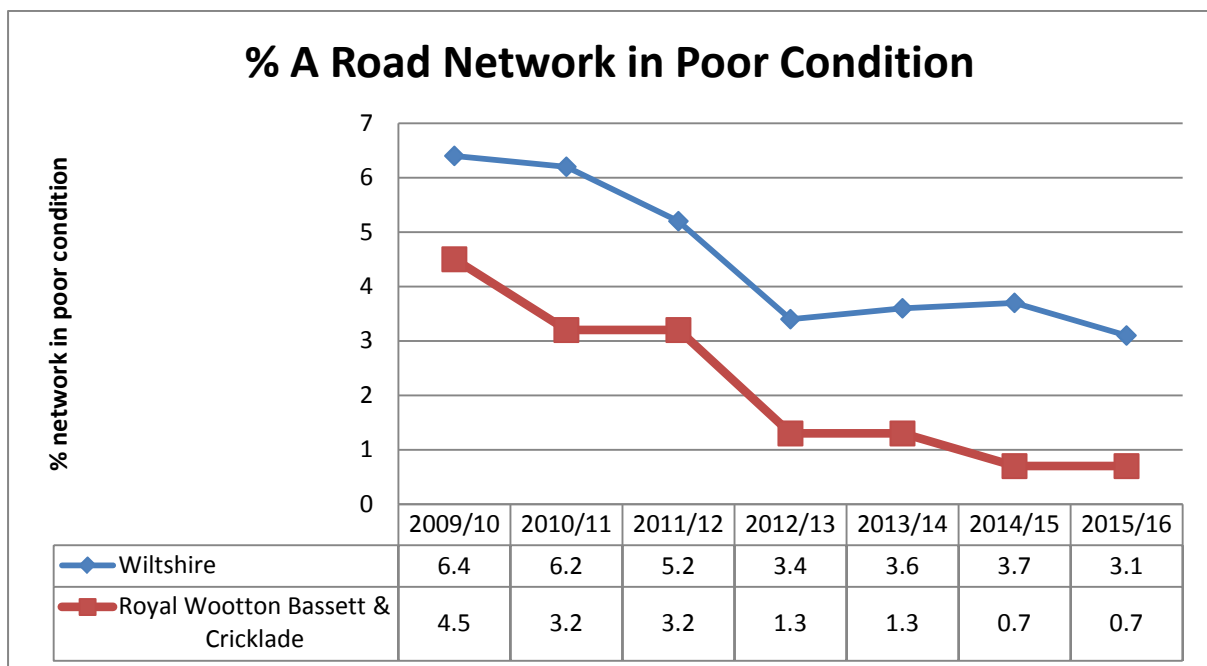
| <b>No</b> | <b>Location</b>                               | <b>Works</b>                 |
|-----------|---|------------------------------|
| 325       | B4069 Chippenham Road, Lyneham                | Resurfacing                  |
| 326       | Un-named road, Hook                           | Skid Resistance Improvements |
| 327       | A3102 Calne Road, Lyneham                     | Skid Resistance Improvements |
| 328       | Broad Town Road Near Marston Farm, Broad Town | Skid Resistance Improvements |

## Highway conditions and technical surveys in your area

Roads deteriorate in condition because of various factors, including traffic volumes, ground conditions, and weather and drainage issues. Technical surveys of the condition of the highway network are carried out annually and the information is used to help prioritise schemes. Road safety is the priority, and maintaining adequate skid resistance on the busy high speed roads is vital.

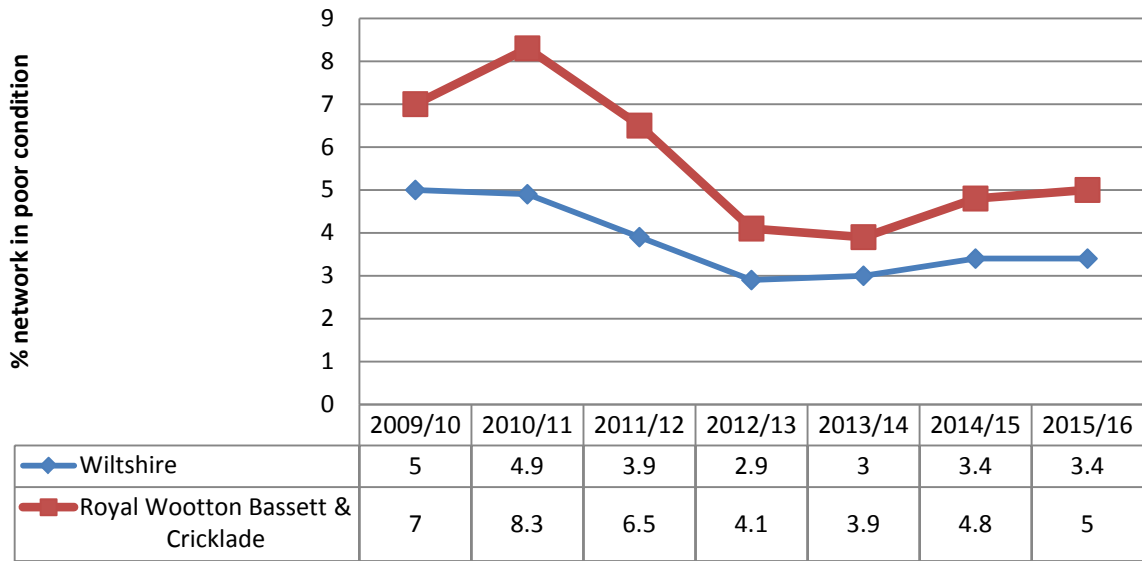
The surveys include the use of a vehicle equipped with lasers and cameras to record road surface condition, which allows us to report on road conditions to the Department for Transport and to prioritise maintenance work. Other surveys include measuring skid resistance on the busier roads.

The road conditions in your area are shown below. It should be noted that low numbers are good because it indicates that less road length should be considered for treatment. More detailed information is shown in Appendix A.

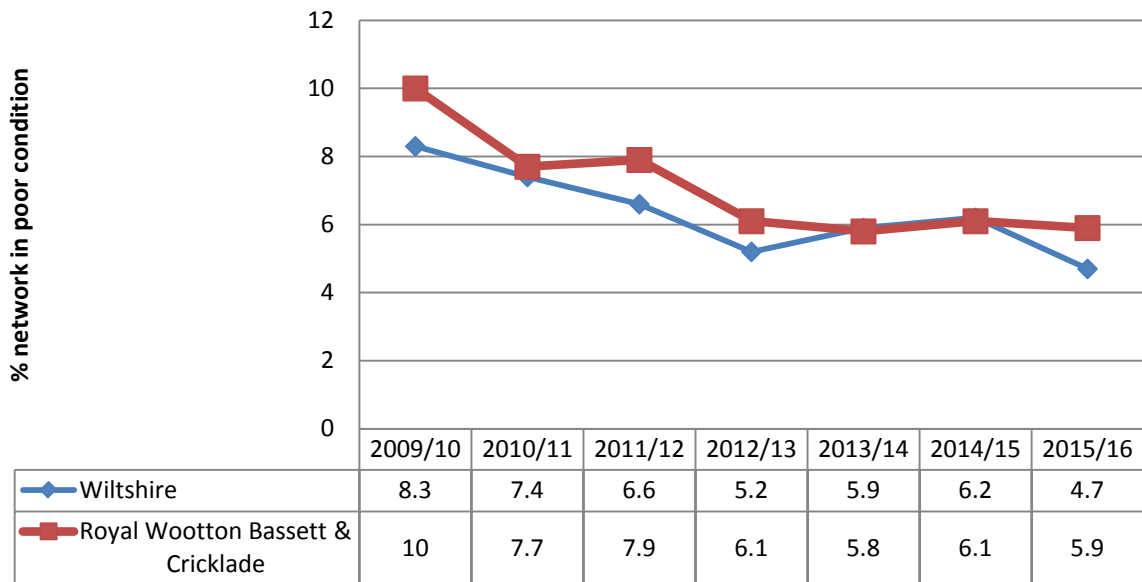


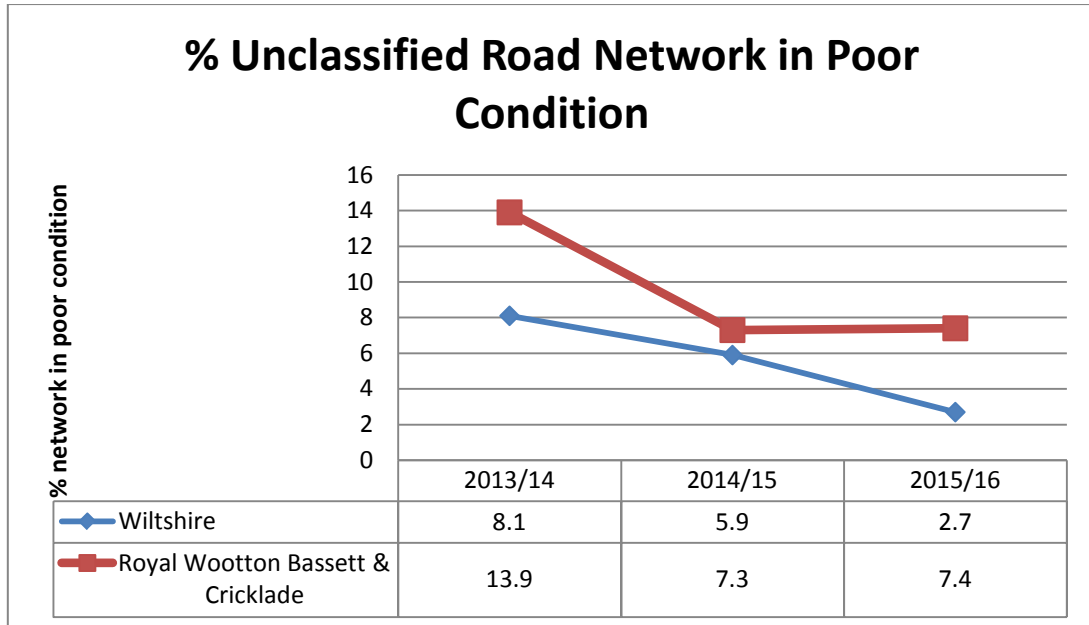


### % B Road Network in Poor Condition



### % C Road Network in Poor Condition





## Integrated transport, bridge and drainage works

### Integrated transport

The Council's traffic engineering team work with our contractors to plan and deliver a range of projects to the local community, most notably through the Area Boards and Community Area Transport Groups (CATGs). The schemes range in size and complexity from simple sign installation through to more complex road safety and improvement schemes.

### Bridges

The Council regularly inspects its bridges and other highway structures. There is a programme of renewal and refurbishment works to keep them in good condition, as well as having to respond to damage caused by collisions.

### Drainage

Programmes of drainage investigations, repairs and flood alleviation schemes are undertaken throughout the year, but the flooding in recent years has meant that there has been a need to respond immediately to flooding issues, as well as dealing with previously identified problem sites. The drainage improvement and flood alleviation work is co-ordinated through the Council's Operational Flood Working Groups that include the Environment Agency, Wessex Water, other organisations and stakeholders.

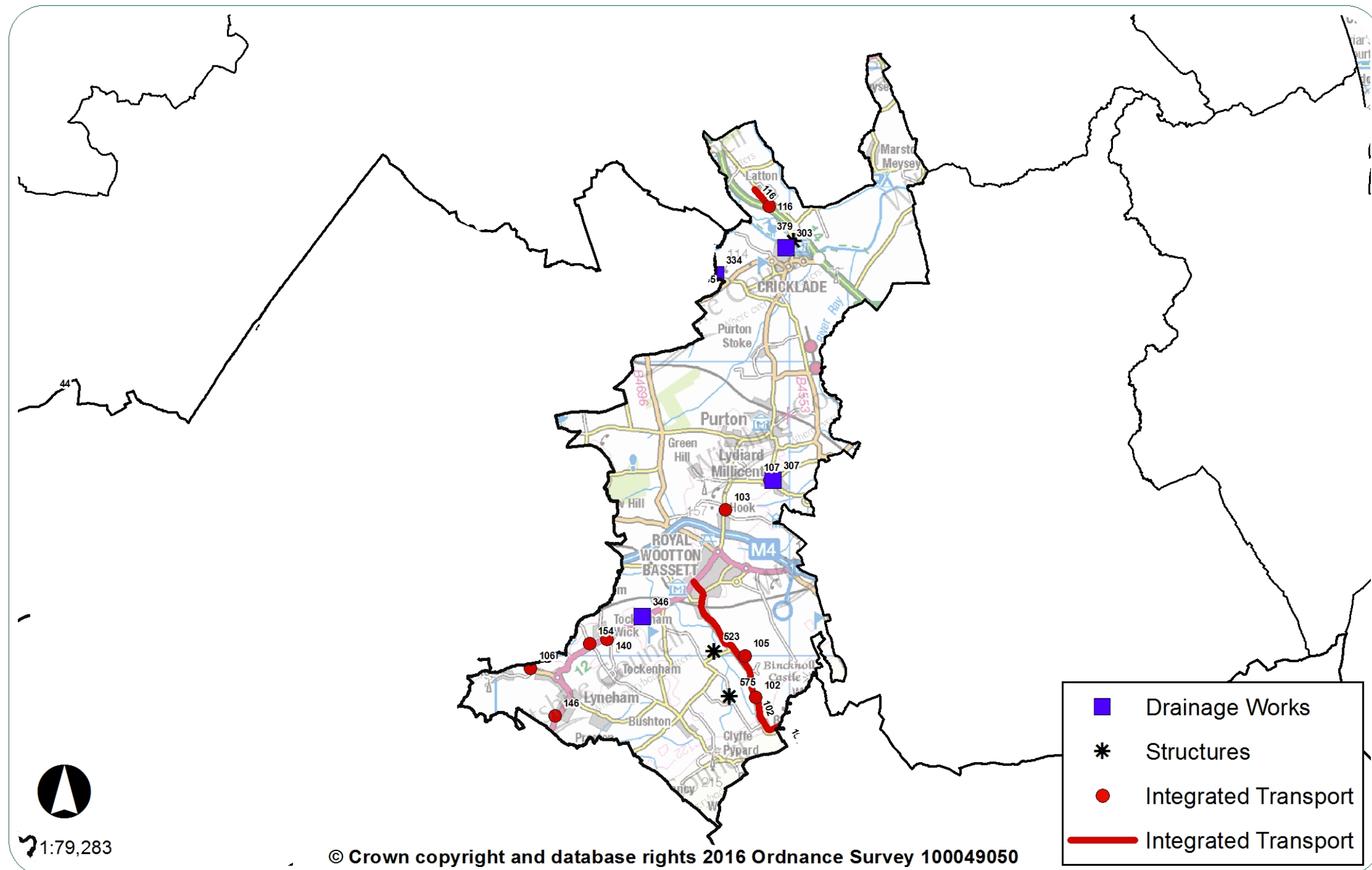
### Recent work in your area

The Integrated Transport, Bridge and Drainage schemes carried out in your area since 2015 are listed below.

Plan showing completed integrated transport, bridge and drainage schemes since 2015



Royal Wootton Bassett & Cricklade Area Board



## Integrated transport schemes since 2015

| No  | Location                   | Description                                |
|-----|----------------------------|--|
| 102 | Broad Town                 | Measures to enforce speed limit            |
| 103 | Hook                       | Traffic calming                            |
| 105 | Lydiard Green              | Footway                                    |
| 106 | B4069 Bradenstoke Junction | Proposed footway                           |
| 107 | Lydiard Millicent          | Road safety by church                      |
| 116 | C419 Latton                | New 7.5t Weight Limit, including electrics |
| 140 | Tockenham                  | Single track road signs                    |
| 146 | Lyneham                    | Village nameplates                         |
| 154 | Tockenham                  | Trow Lane - Unsuitable for HGV signs       |

**Bridge schemes since 2014**

| No  | Location        | Description  |
|-----|-----------------|--|
| 575 | Broad Town      | Trial Holes & Road Closure                                 |
| 379 | Cricklade       | High Bridge Cricklade, re-point arch barrel and elevations |
| 523 | Wootton Bassett | Barnhill, Bridge arch barrel & spandrel                    |

**Drainage works since 2015**

| No  | Location                            | Description                                     |
|-----|-------------------------------------|---|
| 303 | Royal Wootton Bassett and Cricklade | Watercourse restoration                         |
| 307 | Royal Wootton Bassett and Cricklade | Drainage improvements for footpath installation |
| 346 | Royal Wootton Bassett and Cricklade | Replacement of failed/root ingresses pipes      |

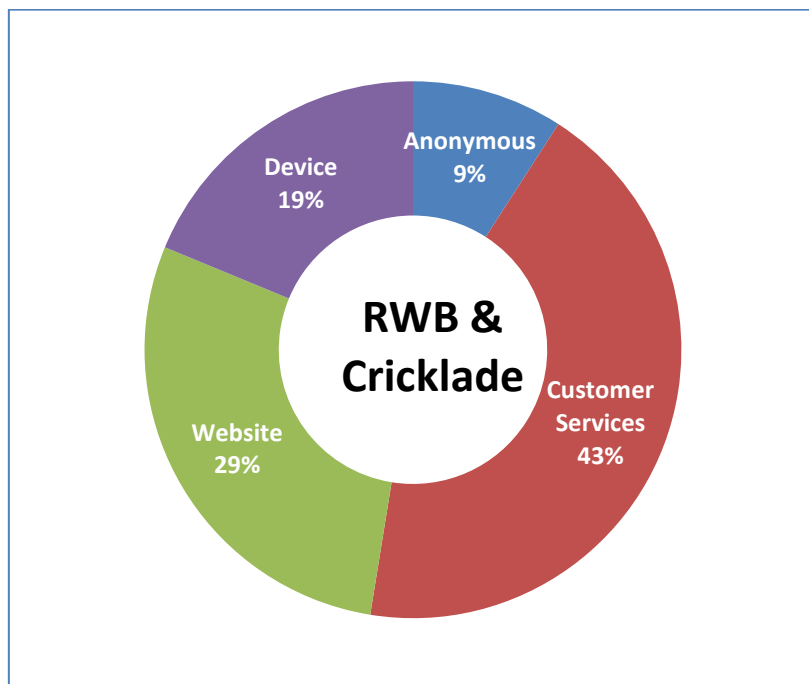
## My Wiltshire



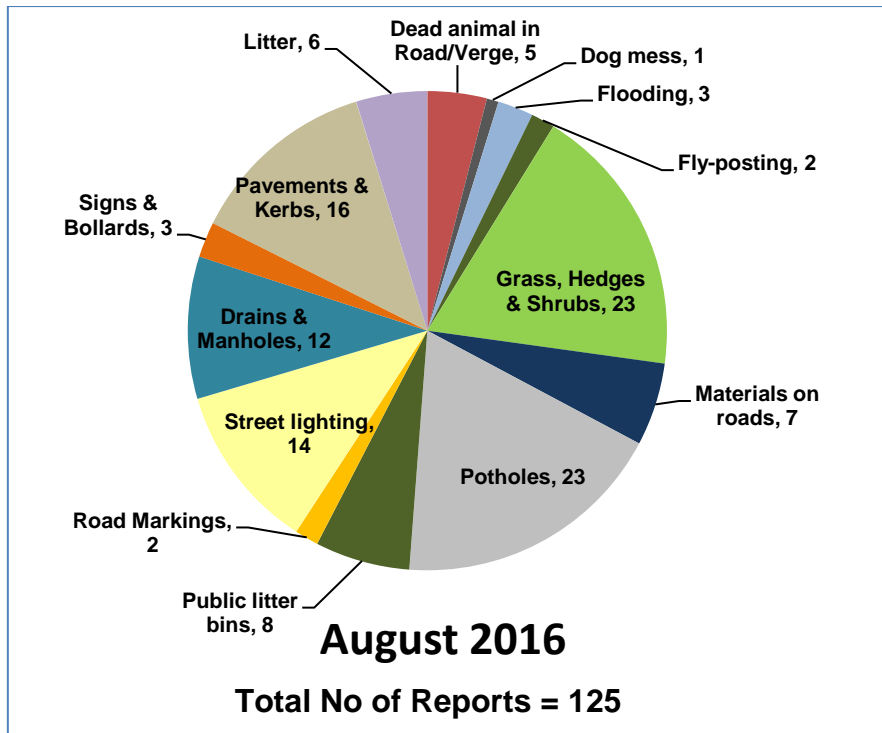
My Wiltshire provides an easy way to report highway issues, including using the Council's website. We have an app so you can report on the go using your smartphone. The My Wiltshire app is available to download at both the [App Store](#) (for iPhones and iPads), from [Google Play](#)<sup>™</sup> (for Android phones) and Windows Store. You can attach information such as photos or videos and pinpoint the location of your report using the mapping software on your phone.

A summary of recent reports in your area is shown below, and further details are shown in Appendix B.

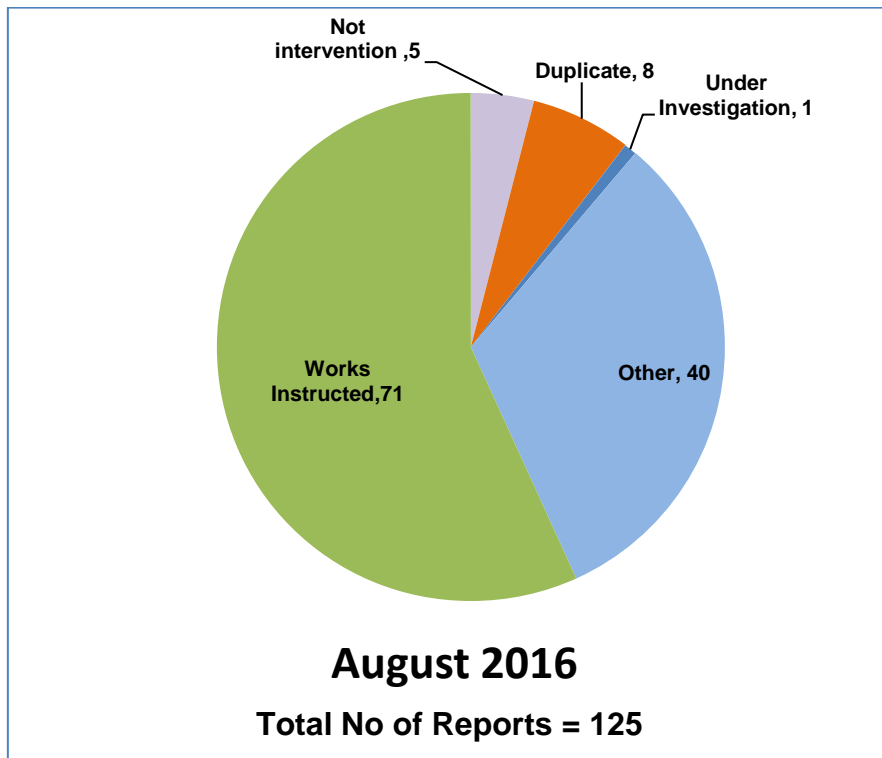
### Customer reporting methods in your area



### Customer reports in your area for the month of August 2016



### Actions following recent reports in your area

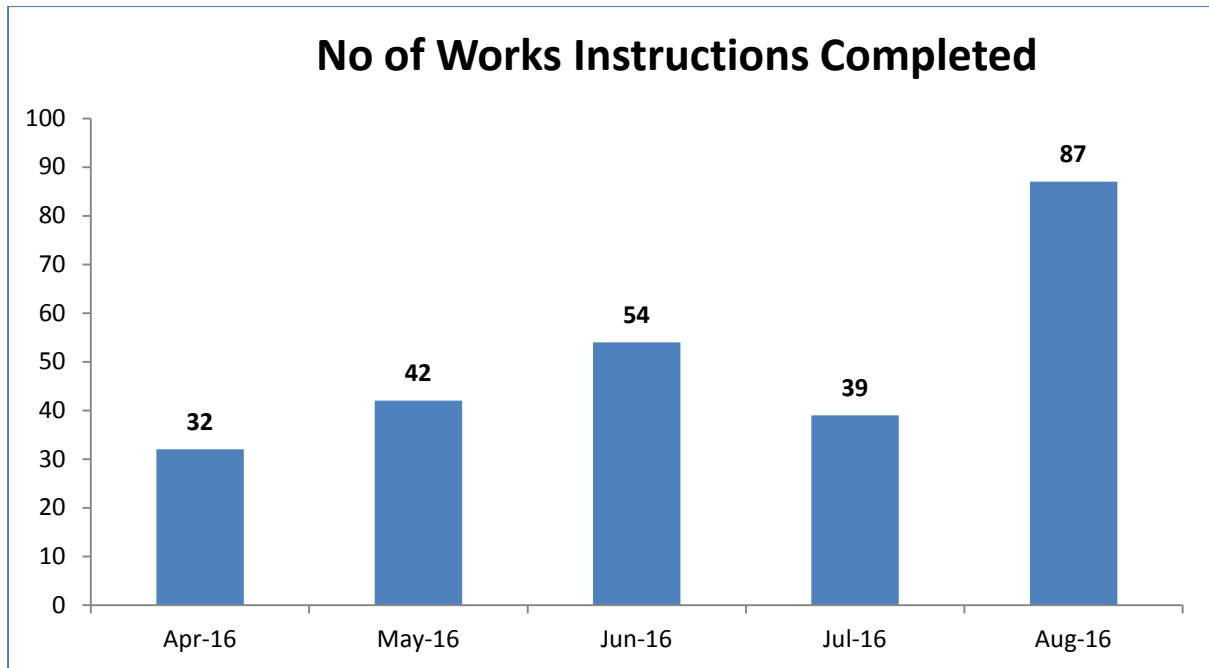


## **Action definitions**

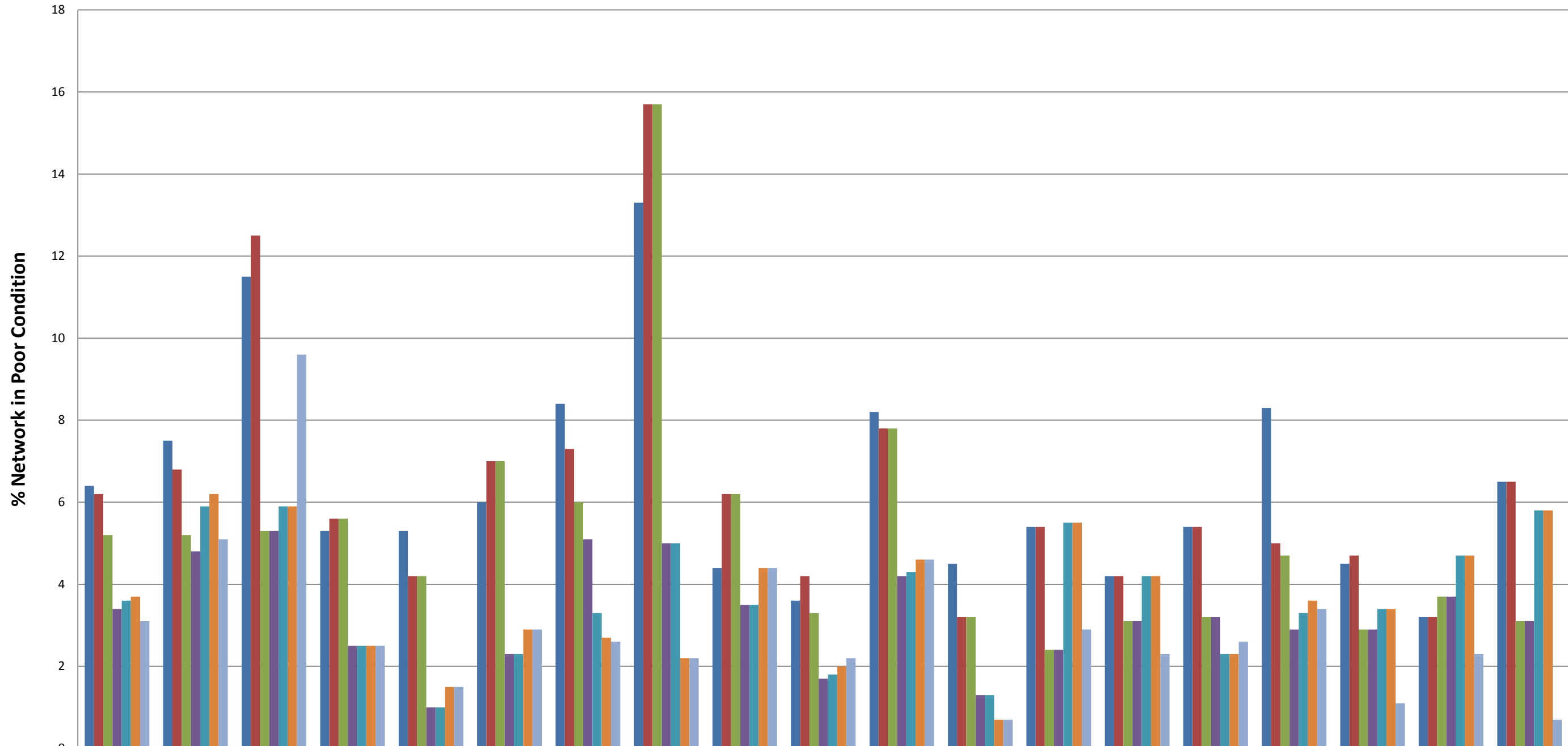
1. **Not Intervention** – the technician has attended site and classified the defect as not meeting intervention levels as per the Highway Inspection Manual 2013 or in the case of streetscene reports, service level agreements.
2. **Duplicate** – a report has already been received in relation to this issue and a works instruction has previously been passed to the contractor to undertake a repair/carry out the necessary works.
3. **Under Investigation** – this issue is currently with a Highways technician or engineer – they may be awaiting information from the customer or the issue requires further investigation e.g. wet weather inspection, drainage survey, exploratory excavation, ownership query.
4. **Discretionary works** – this issue is not a highway safety issue and has been identified as one which falls within the remit of the parish steward scheme.
5. **Other** – the issue has been identified as one which does not require any action by Local Highways. This could be for a number of reasons –
  - the report has been cancelled by the user,
  - there is insufficient information provided to assess the issue and the customer has not provided contact details,
  - the issue is not the responsibility of Wiltshire Council e.g. un-adopted highway, gas/electricity/telephone/water/cable company, Highways England, housing association,
  - the technician attended site and nothing was found at the stated location
  - the issue has been passed to another service within Wiltshire Council e.g. rights of way, bridges.
6. **Works Instructed** – the technician has assessed the issue as requiring works to be carried out and has either dealt with the issue personally or has referred it to the contractor for repair.



**Highway defects completed in your area in recent months**

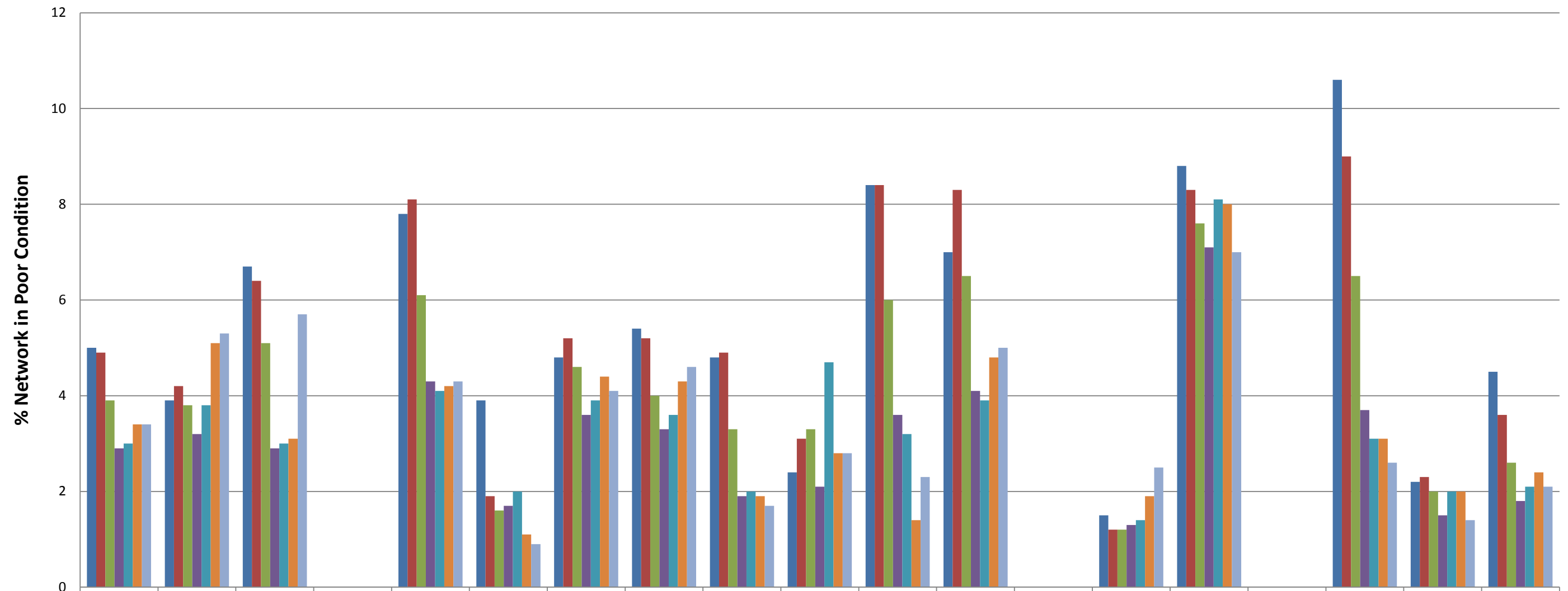


### % A Road Network in Poor Condition



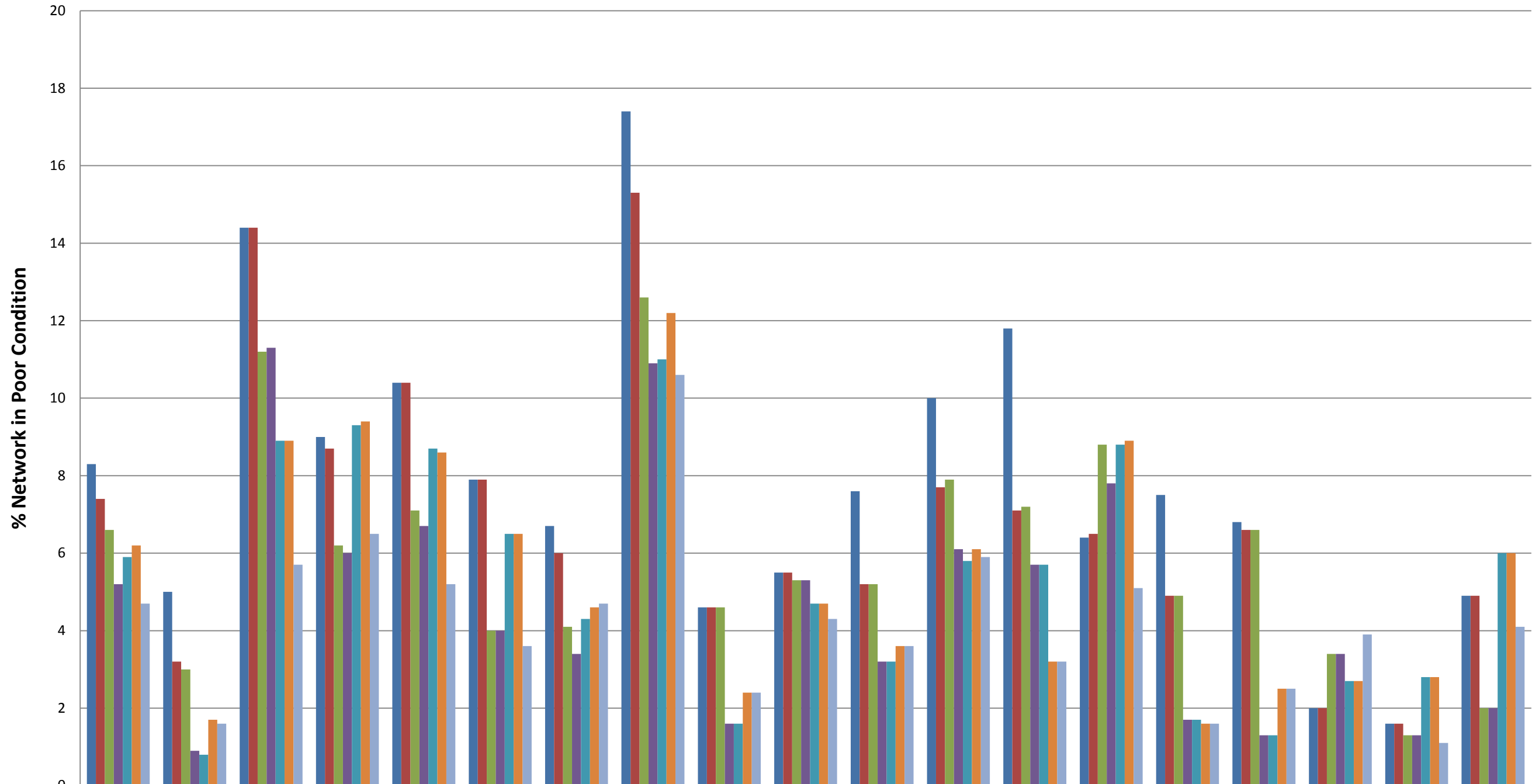
|           | Wiltshire | Amesbury | Bradford On Avon | Calne | Chippenham | Corsham | Devizes | Malmesbury | Marlborough | Melksham | Pewsey | Royal Wootton Bassett & Cricklade | Salisbury | South West Wiltshire | Southern Wiltshire | Tidworth | Trowbridge | Warminster | Westbury |
|-----------|-----------|----------|------------------|-------|------------|---------|---------|------------|-------------|----------|--------|-----------------------------------|-----------|----------------------|--------------------|----------|------------|------------|----------|
| ■ 2009/10 | 6.4       | 7.5      | 11.5             | 5.3   | 5.3        | 6       | 8.4     | 13.3       | 4.4         | 3.6      | 8.2    | 4.5                               | 5.4       | 4.2                  | 5.4                | 8.3      | 4.5        | 3.2        | 6.5      |
| ■ 2010/11 | 6.2       | 6.8      | 12.5             | 5.6   | 4.2        | 7       | 7.3     | 15.7       | 6.2         | 4.2      | 7.8    | 3.2                               | 5.4       | 4.2                  | 5.4                | 5        | 4.7        | 3.2        | 6.5      |
| ■ 2011/12 | 5.2       | 5.2      | 5.3              | 5.6   | 4.2        | 7       | 6       | 15.7       | 6.2         | 3.3      | 7.8    | 3.2                               | 2.4       | 3.1                  | 3.2                | 4.7      | 2.9        | 3.7        | 3.1      |
| ■ 2012/13 | 3.4       | 4.8      | 5.3              | 2.5   | 1          | 2.3     | 5.1     | 5          | 3.5         | 1.7      | 4.2    | 1.3                               | 2.4       | 3.1                  | 3.2                | 2.9      | 2.9        | 3.7        | 3.1      |
| ■ 2013/14 | 3.6       | 5.9      | 5.9              | 2.5   | 1          | 2.3     | 3.3     | 5          | 3.5         | 1.8      | 4.3    | 1.3                               | 5.5       | 4.2                  | 2.3                | 3.3      | 3.4        | 4.7        | 5.8      |
| ■ 2014/15 | 3.7       | 6.2      | 5.9              | 2.5   | 1.5        | 2.9     | 2.7     | 2.2        | 4.4         | 2        | 4.6    | 0.7                               | 5.5       | 4.2                  | 2.3                | 3.6      | 3.4        | 4.7        | 5.8      |
| ■ 2015/16 | 3.1       | 5.1      | 9.6              | 2.5   | 1.5        | 2.9     | 2.6     | 2.2        | 4.4         | 2.2      | 4.6    | 0.7                               | 2.9       | 2.3                  | 2.6                | 3.4      | 1.1        | 2.3        | 0.7      |

### % B Road Network in Poor Condition



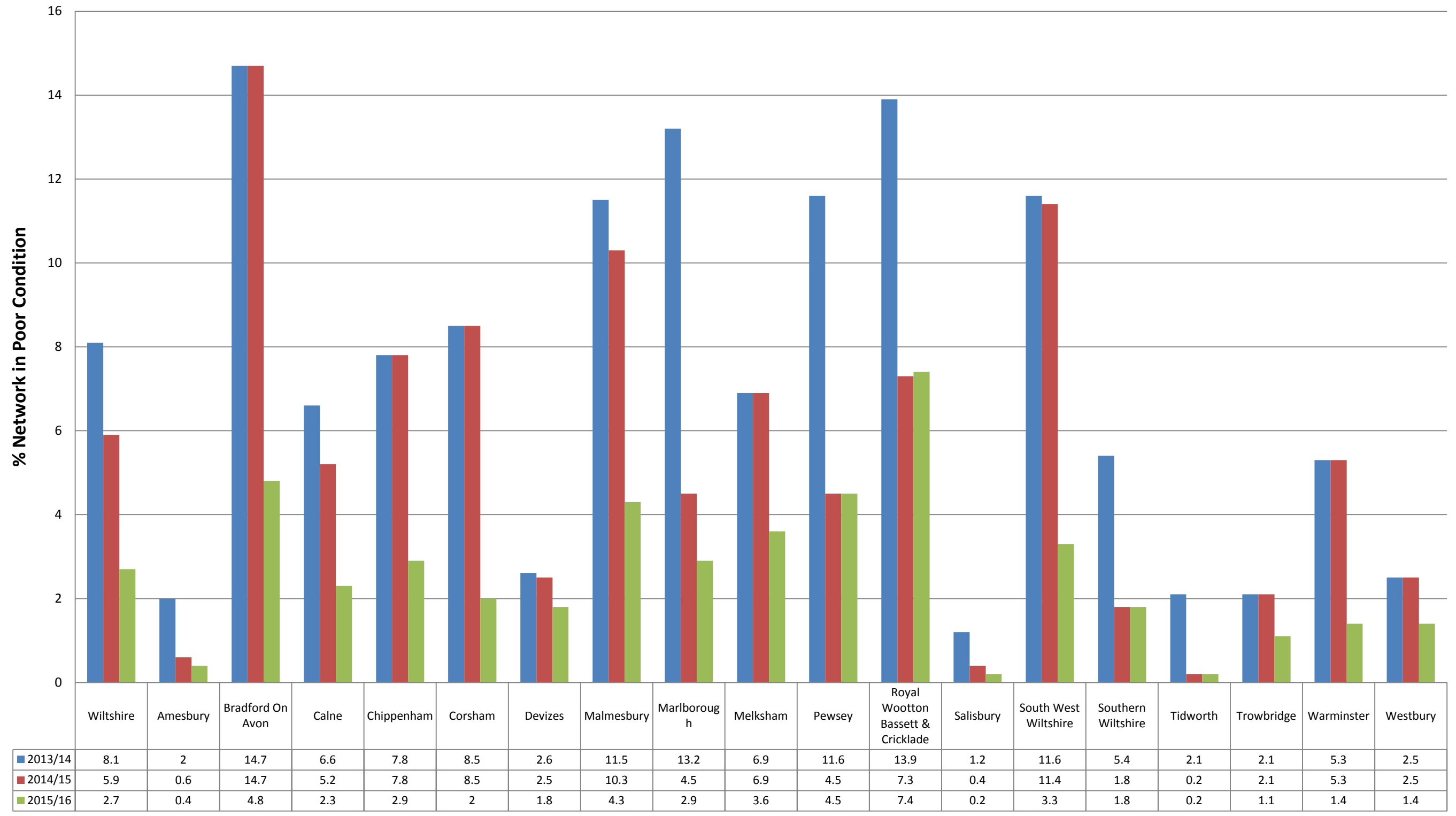
|         | Wiltshire | Amesbury | Bradford On Avon | Calne | Chippenham | Corsham | Devizes | Malmesbury | Marlborough | Melksham | Pewsey | Royal Wootton Bassett & Cricklade | Salisbury | South West Wiltshire | Southern Wiltshire | Tidworth | Trowbridge | Warminster | Westbury |
|---------|-----------|----------|------------------|-------|------------|---------|---------|------------|-------------|----------|--------|-----------------------------------|-----------|----------------------|--------------------|----------|------------|------------|----------|
| 2009/10 | 5         | 3.9      | 6.7              | 0     | 7.8        | 3.9     | 4.8     | 5.4        | 4.8         | 2.4      | 8.4    | 7                                 | 0         | 1.5                  | 8.8                | 0        | 10.6       | 2.2        | 4.5      |
| 2010/11 | 4.9       | 4.2      | 6.4              | 0     | 8.1        | 1.9     | 5.2     | 5.2        | 4.9         | 3.1      | 8.4    | 8.3                               | 0         | 1.2                  | 8.3                | 0        | 9          | 2.3        | 3.6      |
| 2011/12 | 3.9       | 3.8      | 5.1              | 0     | 6.1        | 1.6     | 4.6     | 4          | 3.3         | 3.3      | 6      | 6.5                               | 0         | 1.2                  | 7.6                | 0        | 6.5        | 2          | 2.6      |
| 2012/13 | 2.9       | 3.2      | 2.9              | 0     | 4.3        | 1.7     | 3.6     | 3.3        | 1.9         | 2.1      | 3.6    | 4.1                               | 0         | 1.3                  | 7.1                | 0        | 3.7        | 1.5        | 1.8      |
| 2013/14 | 3         | 3.8      | 3                | 0     | 4.1        | 2       | 3.9     | 3.6        | 2           | 4.7      | 3.2    | 3.9                               | 0         | 1.4                  | 8.1                | 0        | 3.1        | 2          | 2.1      |
| 2014/15 | 3.4       | 5.1      | 3.1              | 0     | 4.2        | 1.1     | 4.4     | 4.3        | 1.9         | 2.8      | 1.4    | 4.8                               | 0         | 1.9                  | 8                  | 0        | 3.1        | 2          | 2.4      |
| 2015/16 | 3.4       | 5.3      | 5.7              | 0     | 4.3        | 0.9     | 4.1     | 4.6        | 1.7         | 2.8      | 2.3    | 5                                 | 0         | 2.5                  | 7                  | 0        | 2.6        | 1.4        | 2.1      |

### % C Road Network in Poor Condition



|           | Wiltshire | Amesbury | Bradford On Avon | Calne | Chippenham | Corsham | Devizes | Malmesbury | Marlborough | Melksham | Pewsey | Royal Wootton Bassett & Cricklade | Salisbury | South West Wiltshire | Southern Wiltshire | Tidworth | Trowbridge | Warminster | Westbury |
|-----------|-----------|----------|------------------|-------|------------|---------|---------|------------|-------------|----------|--------|-----------------------------------|-----------|----------------------|--------------------|----------|------------|------------|----------|
| ■ 2009/10 | 8.3       | 5        | 14.4             | 9     | 10.4       | 7.9     | 6.7     | 17.4       | 4.6         | 5.5      | 7.6    | 10                                | 11.8      | 6.4                  | 7.5                | 6.8      | 2          | 1.6        | 4.9      |
| ■ 2010/11 | 7.4       | 3.2      | 14.4             | 8.7   | 10.4       | 7.9     | 6       | 15.3       | 4.6         | 5.5      | 5.2    | 7.7                               | 7.1       | 6.5                  | 4.9                | 6.6      | 2          | 1.6        | 4.9      |
| ■ 2011/12 | 6.6       | 3        | 11.2             | 6.2   | 7.1        | 4       | 4.1     | 12.6       | 4.6         | 5.3      | 5.2    | 7.9                               | 7.2       | 8.8                  | 4.9                | 6.6      | 3.4        | 1.3        | 2        |
| ■ 2012/13 | 5.2       | 0.9      | 11.3             | 6     | 6.7        | 4       | 3.4     | 10.9       | 1.6         | 5.3      | 3.2    | 6.1                               | 5.7       | 7.8                  | 1.7                | 1.3      | 3.4        | 1.3        | 2        |
| ■ 2013/14 | 5.9       | 0.8      | 8.9              | 9.3   | 8.7        | 6.5     | 4.3     | 11         | 1.6         | 4.7      | 3.2    | 5.8                               | 5.7       | 8.8                  | 1.7                | 1.3      | 2.7        | 2.8        | 6        |
| ■ 2014/15 | 6.2       | 1.7      | 8.9              | 9.4   | 8.6        | 6.5     | 4.6     | 12.2       | 2.4         | 4.7      | 3.6    | 6.1                               | 3.2       | 8.9                  | 1.6                | 2.5      | 2.7        | 2.8        | 6        |
| ■ 2015/16 | 4.7       | 1.6      | 5.7              | 6.5   | 5.2        | 3.6     | 4.7     | 10.6       | 2.4         | 4.3      | 3.6    | 5.9                               | 3.2       | 5.1                  | 1.6                | 2.5      | 3.9        | 1.1        | 4.1      |

### % Unclassified Road Network in Poor Condition



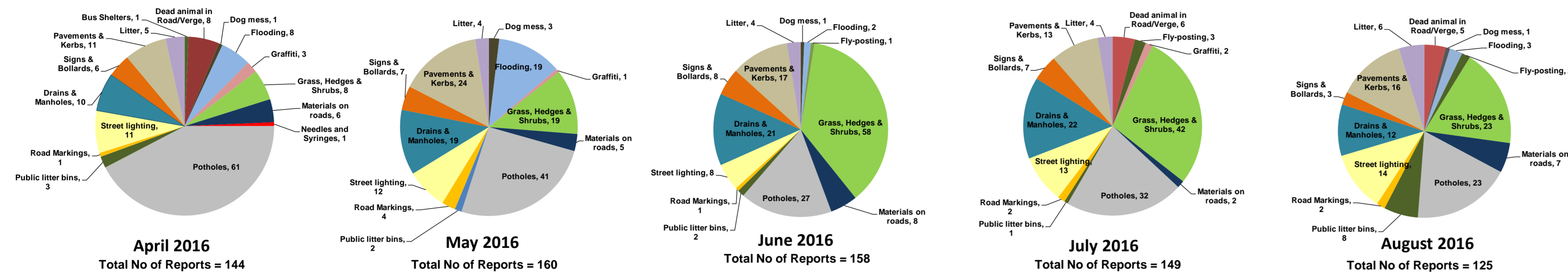
# Appendix B: My Wiltshire Statistics



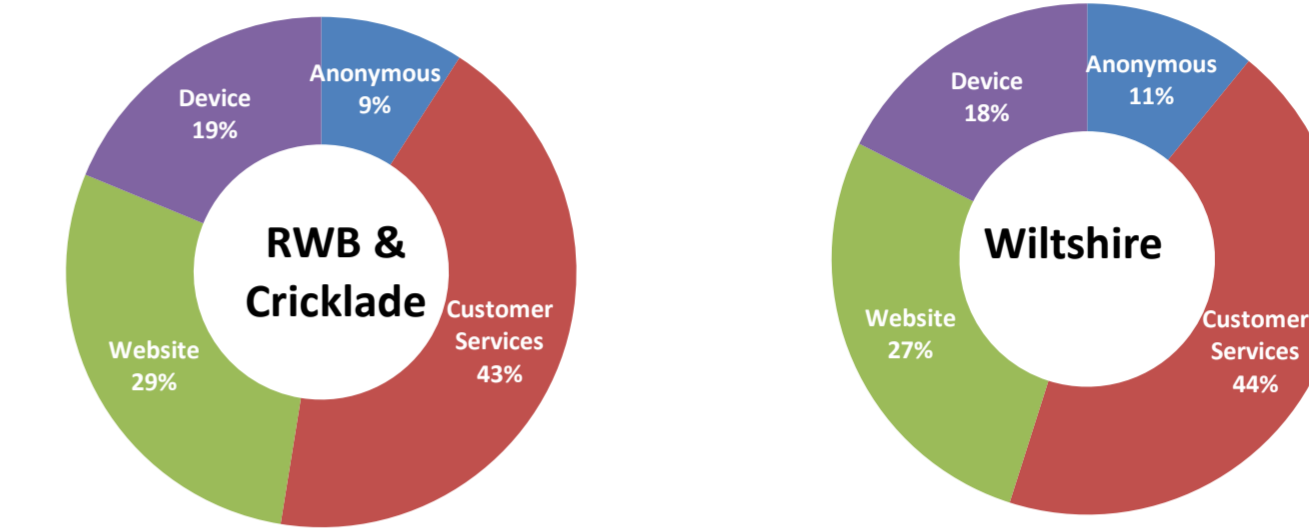
## Royal Wootton Bassett & Cricklade Area Board



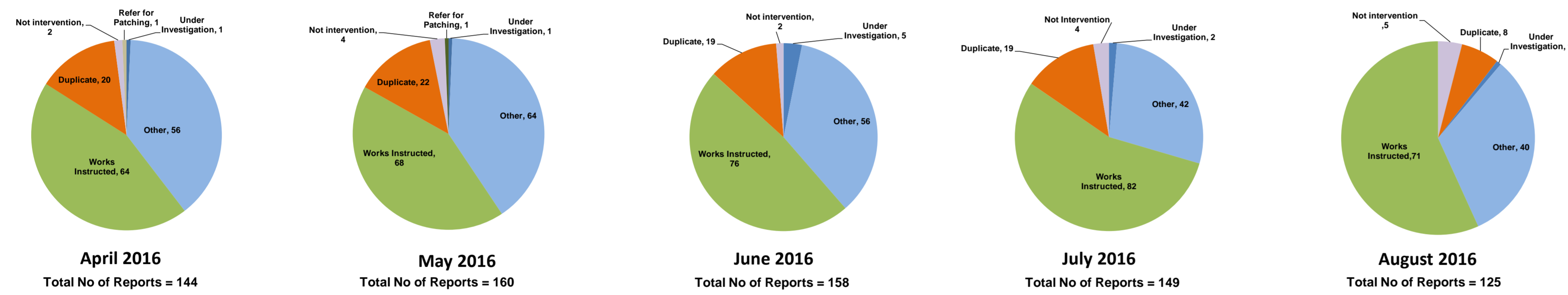
### Customer Reported Issues



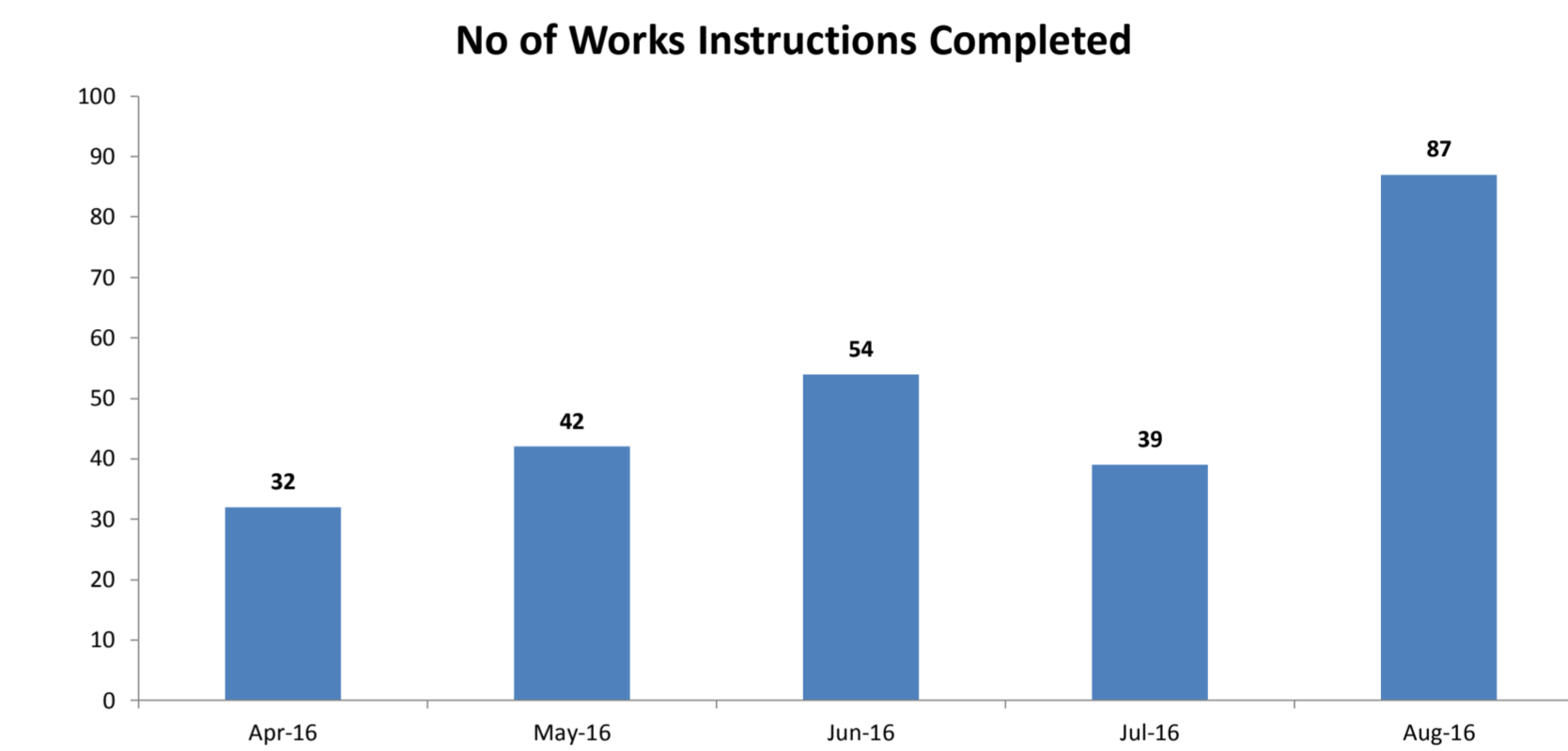
### Reporting Channels



### Customer Call Outcomes



### Completed in Month



### Safety Inspections

